



# Chromebook Accessibility

**Laura Allen & Kara Booker**

# Agenda

- ✓ Why Accessibility Matters
- ✓ Chromebook accessibility features
- ✓ Exploring additional extensions
- ✓ Leveraging G Suite apps for diverse learners
- ✓ Where to learn more

# Why accessibility matters

# 15% of the world's population has some form of disability

## **Vision**

Blind  
Low Vision  
Colorblind  
Farsighted



## **Hearing**

Deaf or Hard of Hearing



## **Motor**

Loss of function of a body part - ranges from total paralysis to limited dexterity and mobility



## **Cognitive**

Challenge processing info. May affect: reading, writing, organization, comm., focus





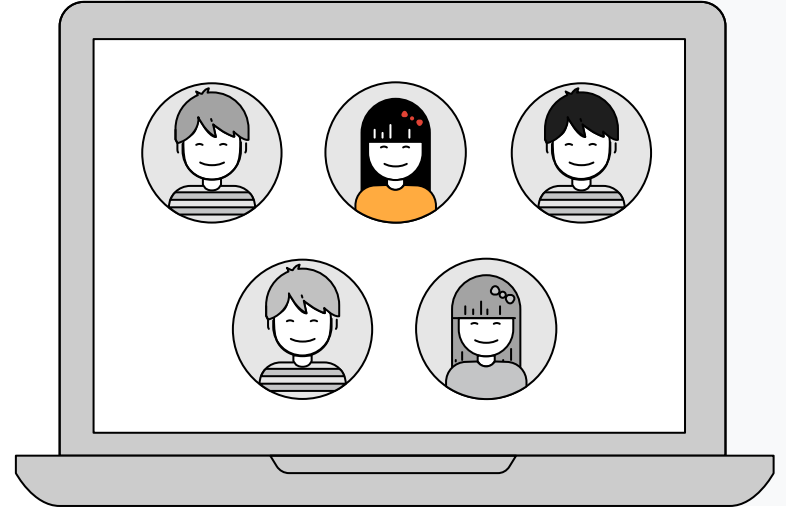
**There are 93 million  
children living with a  
disability worldwide.**

UNICEF



# 1 in 5 school-age children have special needs in the US

Education Week



Access - or lack thereof - can shift someone's  
entire trajectory

“Inclusion [with ATs and Chromebooks] has increased the ability for students who would typically be taken out of class to now be in the class getting the same knowledge, same vocabulary, same content, as other students and allows students to be part of their peers and more socially accepted.”



# Accessible out of the box

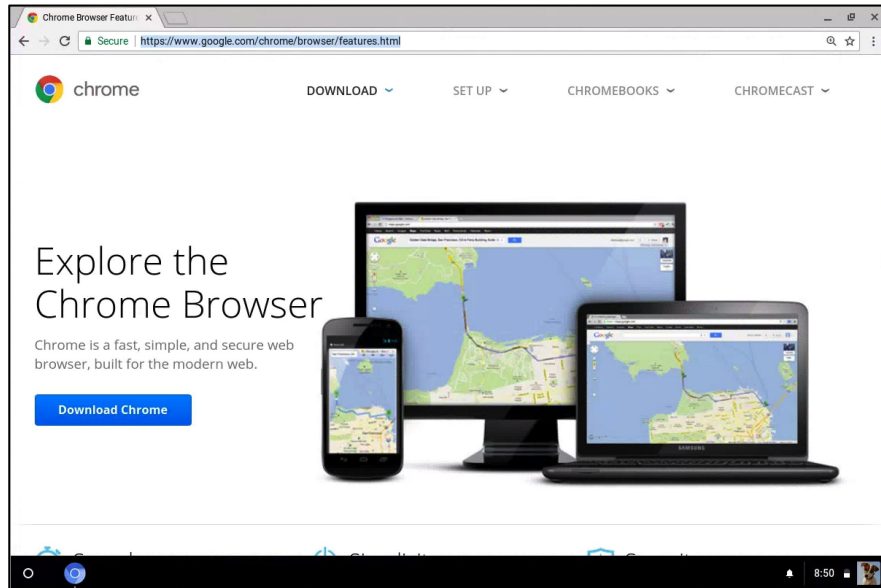
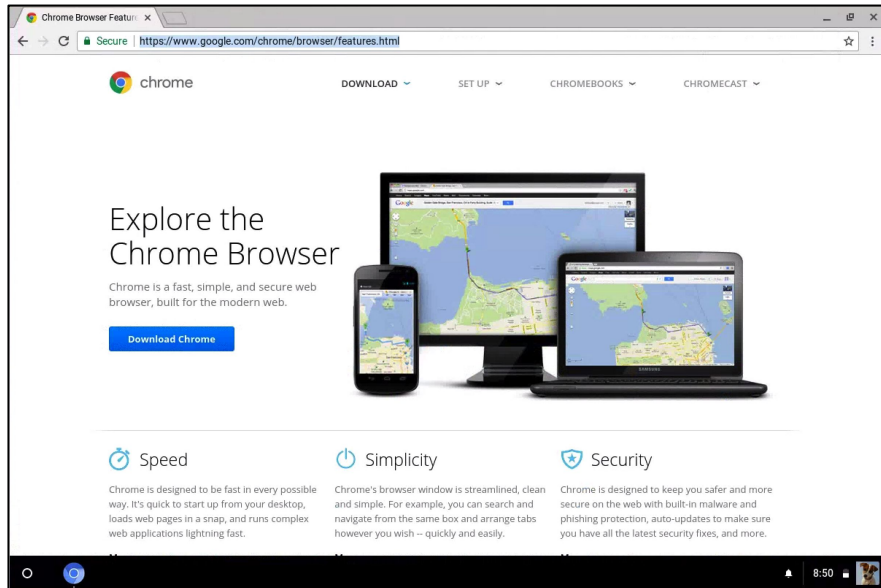
Chromebooks and other Chrome devices can be enjoyed by everyone, including users with disabilities, right out of the box.



**Making things easier to see**

# Increase Size of Browser Content

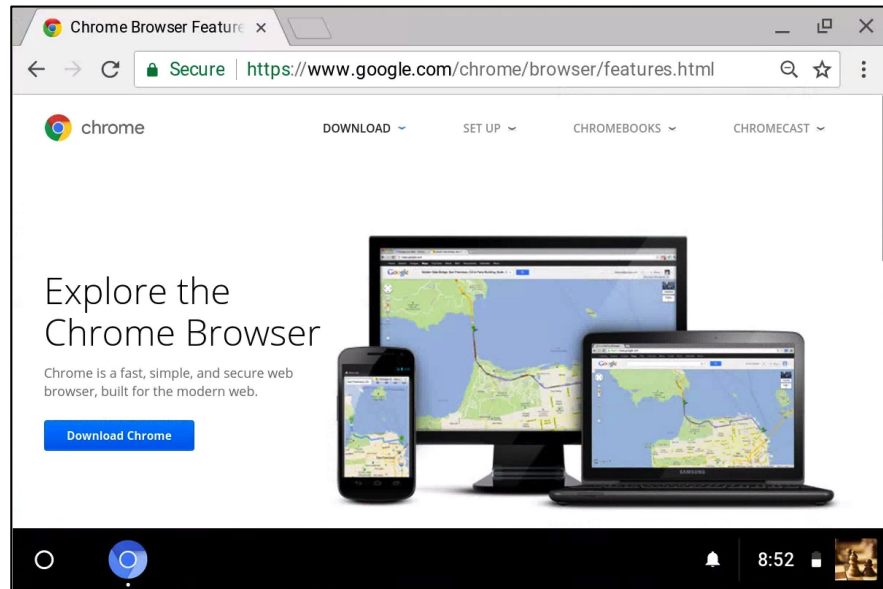
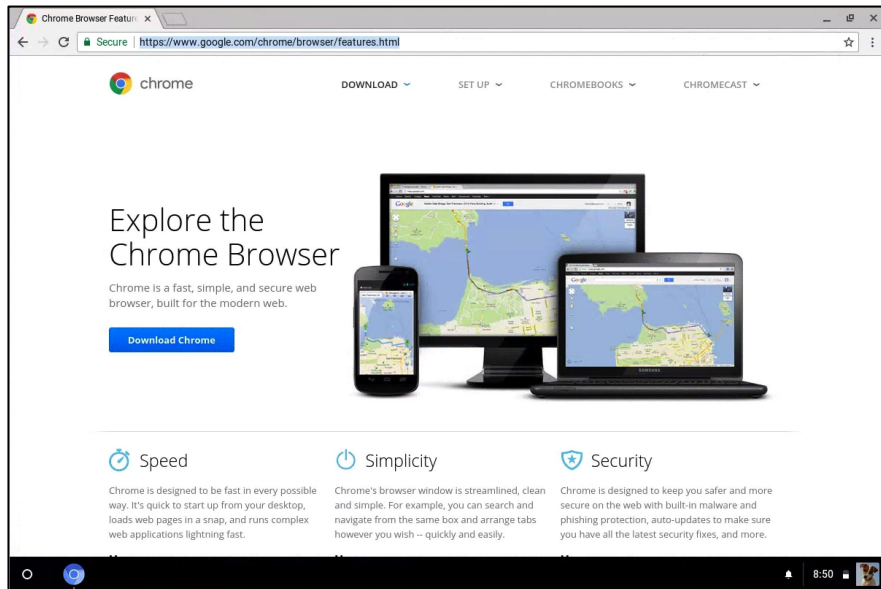
Press **Ctrl + Plus** to increase, **Ctrl + Minus** to decrease, **Ctrl + 0** to reset  
The rest of the desktop is unaffected



# Increase Size of All Items

Press **Ctrl + Shift + Plus** to increase, **Ctrl + Shift + Minus** to decrease

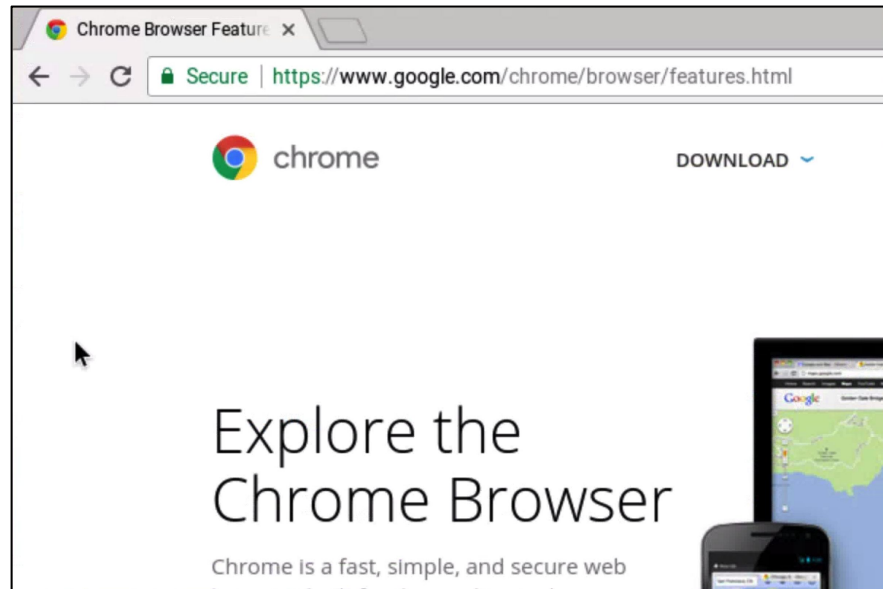
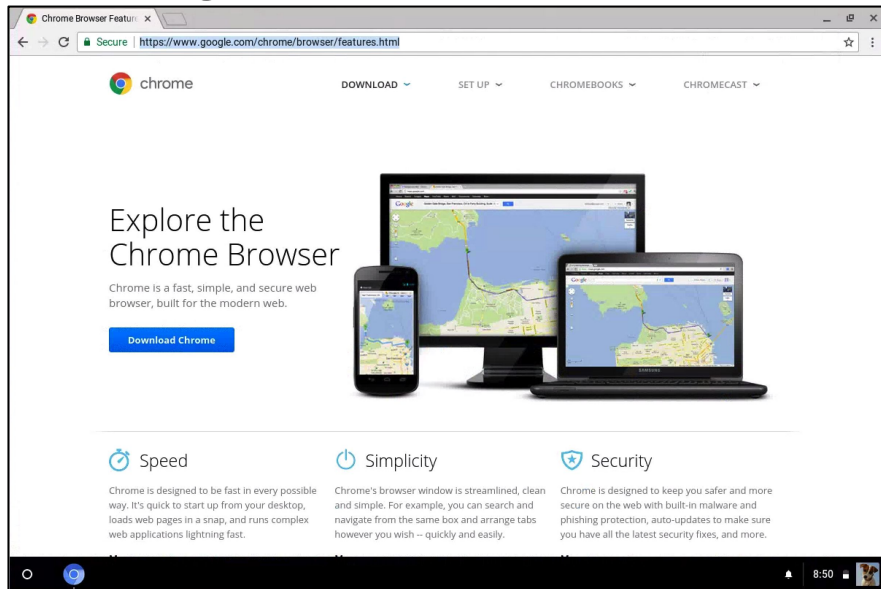
Note that the status tray and tab strip enlarge, too. **Ctrl + Shift + 0** to reset.



# Turn on Built-In Fullscreen Magnifier

Settings > Accessibility > Enable Screen Magnifier, or **Ctrl + Search + m**

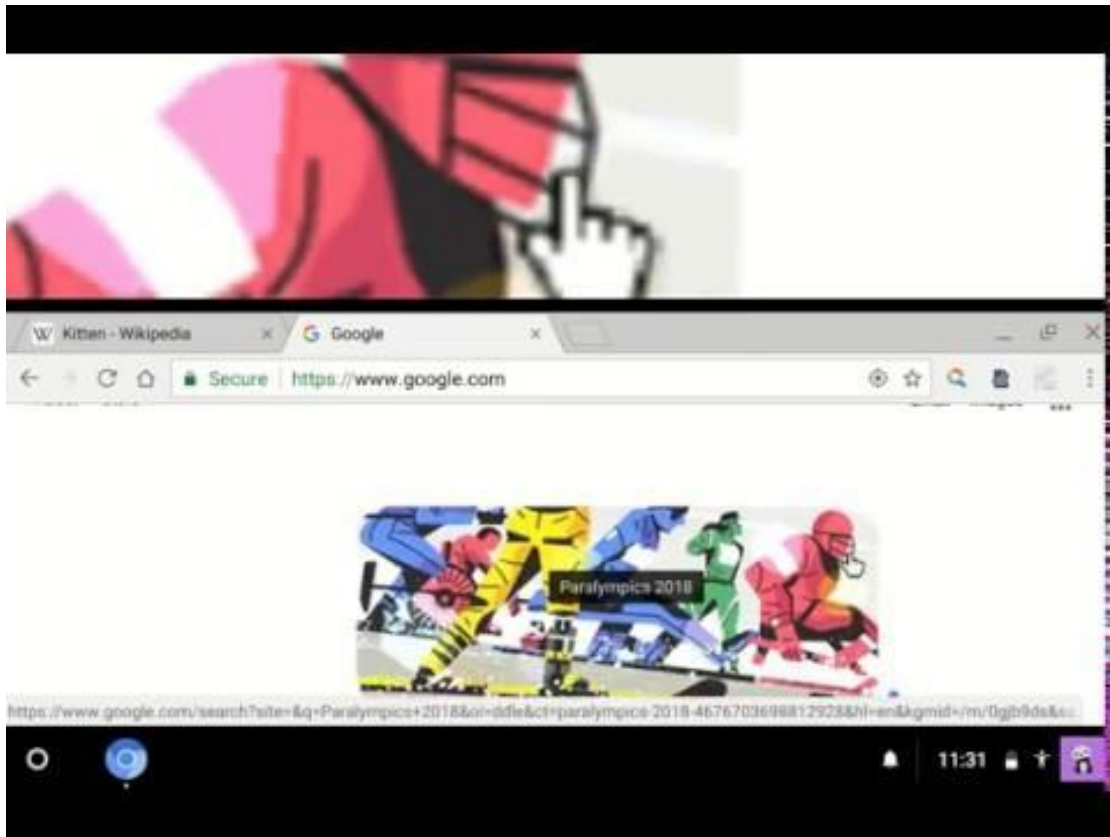
To adjust, hold **Ctrl + Alt** and scroll 2 fingers on touchpad, or adjust in settings



# Use the Docked Magnifier

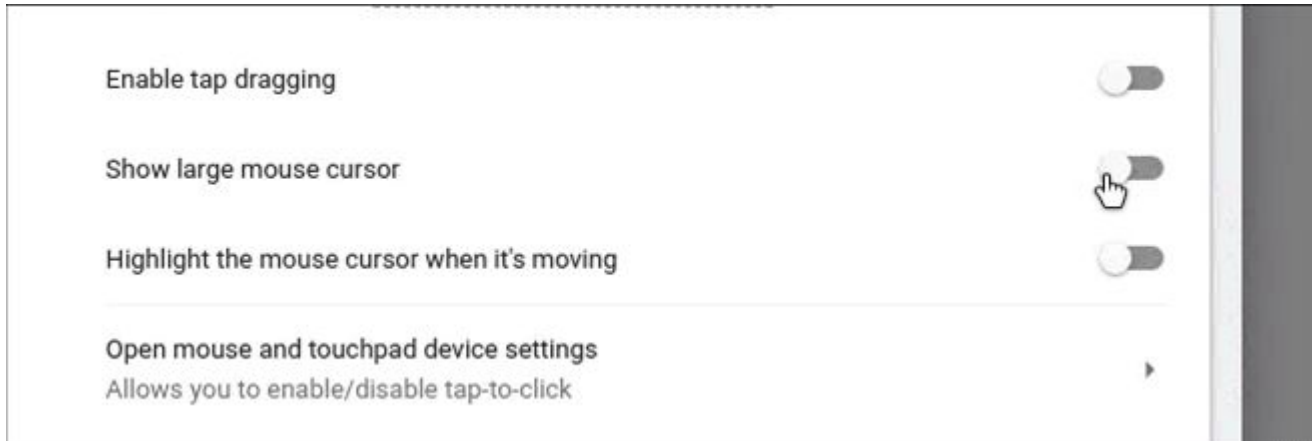
Settings > Accessibility >  
Enable Docked Magnifier, or  
**Ctrl + Search + d**

To adjust zoom level,  
choose a zoom level from the  
dropdown in settings, or  
press **Ctrl + Alt** and **scroll 2  
fingers** on the touchpad.



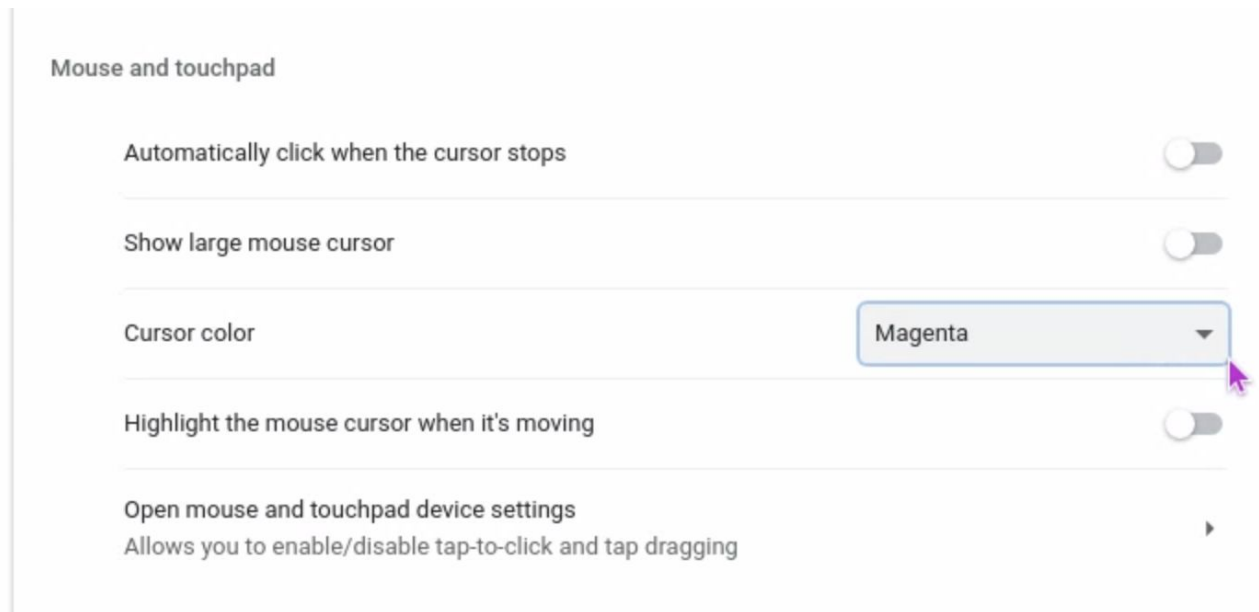
# Adjustable Mouse Cursor

Some users prefer a larger mouse cursor.



# Change the Color of the Mouse Cursor

Some users prefer different cursor colors to improve visibility.





# Highlight the Mouse Cursor, Text Caret, and Focus

In addition, colored circles can highlight the mouse cursor, text caret (insertion point), and the object with keyboard focus.

**Confirm your password**

**Birthday**

April


Day

Year

**Gender**

I am...

**Mobile phone**



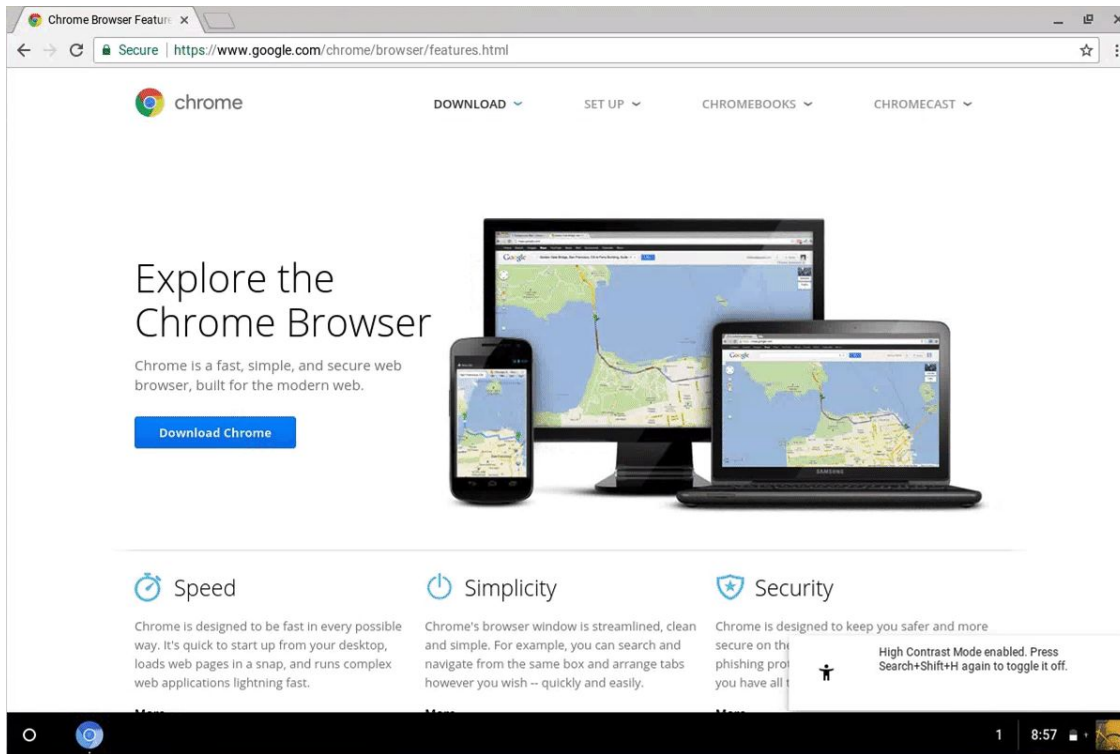
**Your current email address**

# High-Contrast Mode

We also offer lots of options for users who just want to make the screen a little bit easier to see.

Some users prefer High-contrast mode, which inverts all colors.

Press **Ctrl + Search + h** to toggle.



# Features for improved motor interactions

# Easy Dictation into Any Text Field

Speak to type text into any edit field on your Chromebook!

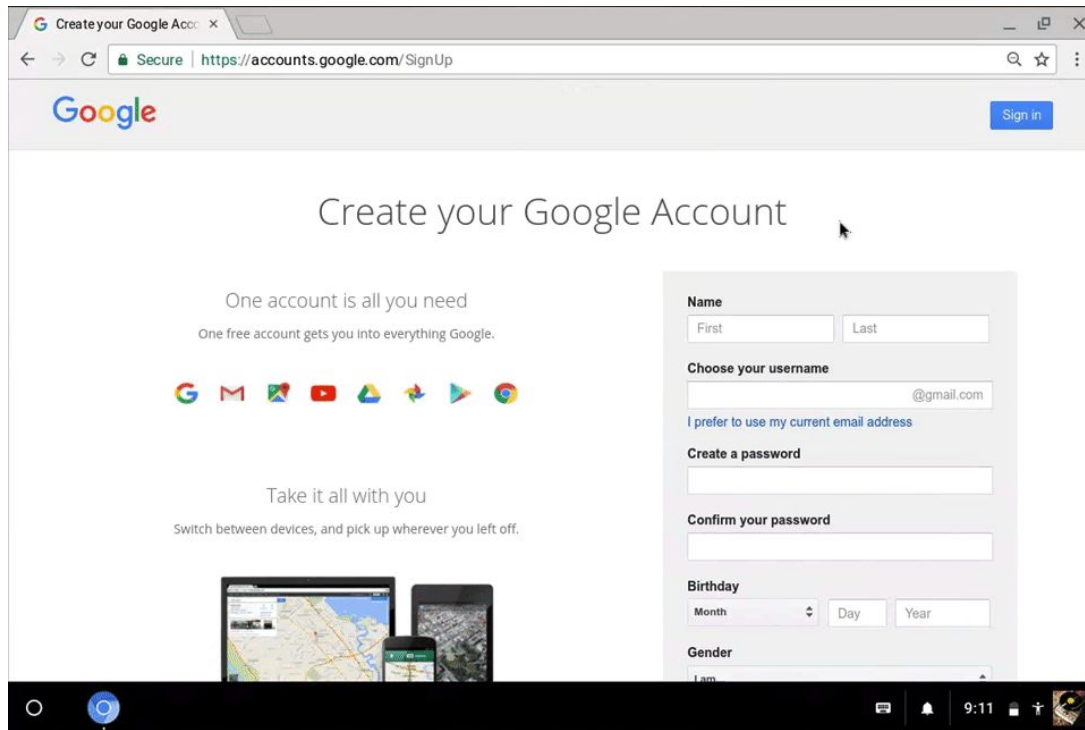
- Enable in Accessibility Settings
- Place your cursor in an edit field
- Click or tap the microphone icon, or press **Search + d** to begin



# On-Screen Keyboard

The on-screen keyboard enables typing into any text field using a touchscreen or with the mouse.

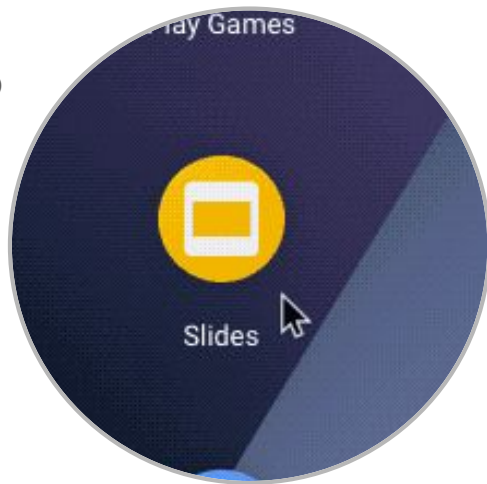
It also supports handwriting and dictation.



# Chrome OS

## Automatic Clicks

High-impact feature for users with motor impairments who don't have the ability to put pressure on the mouse to click. Pairs with mouse, joystick, or head control.





WIKIPEDIA  
The Free Encyclopedia

Main page  
Contents  
Featured content  
Current events  
Random article  
Donate to Wikipedia  
Wikipedia store

Interaction  
Help  
About Wikipedia  
Community portal  
Recent changes  
Contact page

Tools  
What links here  
Related changes  
Upload file  
Special pages  
Permanent link  
Page information  
Wikidata item  
Cite this page

In other projects  
Wikimedia Commons

Article Talk



Wiki Loves Monuments: Photograph  
**Learn more**

## Puppy

From Wikipedia, the free encyclopedia

*This article is about the domestic dog. For other uses, see **Puppy** (disambiguation).*

A **puppy** is a **juvenile** dog. Some puppies can weigh 1-1.5 kg (1-3 lb), while larger ones can weigh up to 7–11 kg (15-23 lb). All healthy puppies grow quickly after birth. A puppy's coat color may change as the puppy grows older, as is commonly seen in breeds such as the Yorkshire Terrier. Puppy refers specifically to young dogs,<sup>[1]</sup> while *pup* may be used for other animals such as seals, giraffes, guinea pigs, rats or sharks.<sup>[2]</sup>

### Contents [hide]

- 1 Development
- 2 Socialization
- 3 Docking and declawing
- 4 References
- 5 Further reading
- 6 External links

## Development

Born after an average of 63 days of **gestation**, puppies emerge in an **amnion** that is bitten off and eaten by the mother dog.<sup>[3]</sup> Puppies begin to **nurse** almost immediately. If the **litter** exceeds six puppies, particularly if one or more are obvious **runts**, human intervention in hand-feeding the stronger puppies is necessary to ensure that the runts get proper nourishment and attention from the mother. As they one month of age, puppies are gradually **weaned** and begin to eat solid food. The mother may regurgitate partially digested food for puppies or might let them eat some of her solid food.<sup>[4]</sup> The mother usually refuses to nurse at this stage, though she might let them



Golden Retriever puppy



Recording 01:12

Your desktop is being recorded

Auto-stop OFF

Show webcam preview

Not logged in | Talk | powered by Screencastify

View source | View history | Search Wikipedia

# Physical Keyboard & Touchpad Settings

For users who have difficulty using a mouse, touchpad, or keyboard, there are many options to make them easier to use.

Touchpad Settings	Physical Keyboard Settings
<ul style="list-style-type: none"><li>● Tap to click</li><li>● Tap dragging</li><li>● Automatic clicks</li></ul>	<ul style="list-style-type: none"><li>● Sticky keys</li><li>● Adjust keyboard repeat rate</li><li>● Adjust delay before repeating</li></ul>



# Chrome OS Switch Access

Enables a user to interact with their device using one or more switches. For users who can't use a traditional mouse and keyboard, Switch Access automatically scans the items on your screen until you make a selection with a switch.



**Captions & making content  
easier to hear**

# Mono Audio

For any users who may have limited hearing in one ear, there's a Mono Audio option to play the same sound through both speakers.




# Customize Captions Styles

Adjust font, text size, text color, opacity, shadow and more of closed captions in videos!

← Captions

Preview

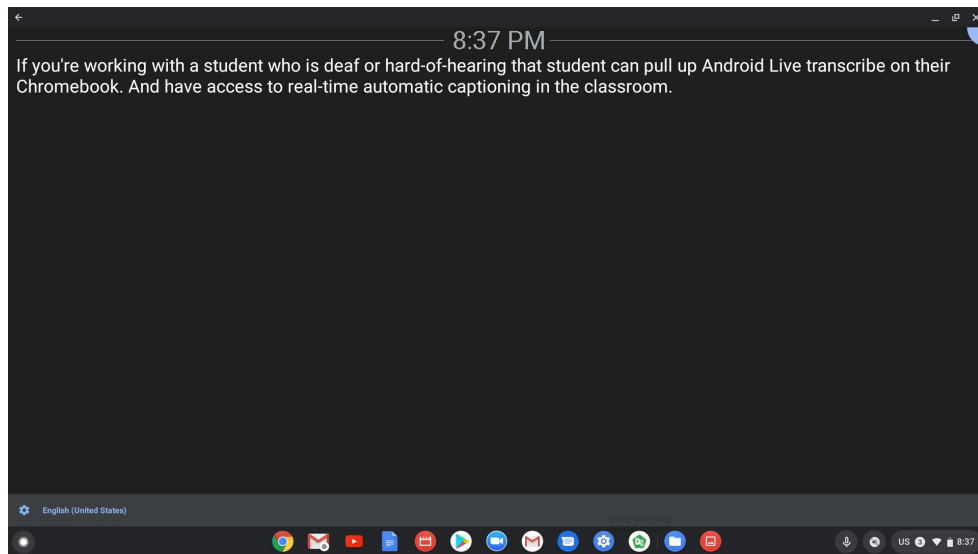


Settings

Text size	Medium (Recommended) ▼
Text font	Default ▼
Text color	Default ▼
Text opacity	Opaque ▼
Text shadow	None ▼
Background color	Default ▼
Background opacity	Opaque ▼

# Access Android Live Transcribe from the Play Store!

Live Transcribe is an Android app that is also available on Chromebooks. Search and install Live Transcribe to get realtime captions of spoken audio in a wide variety of languages!

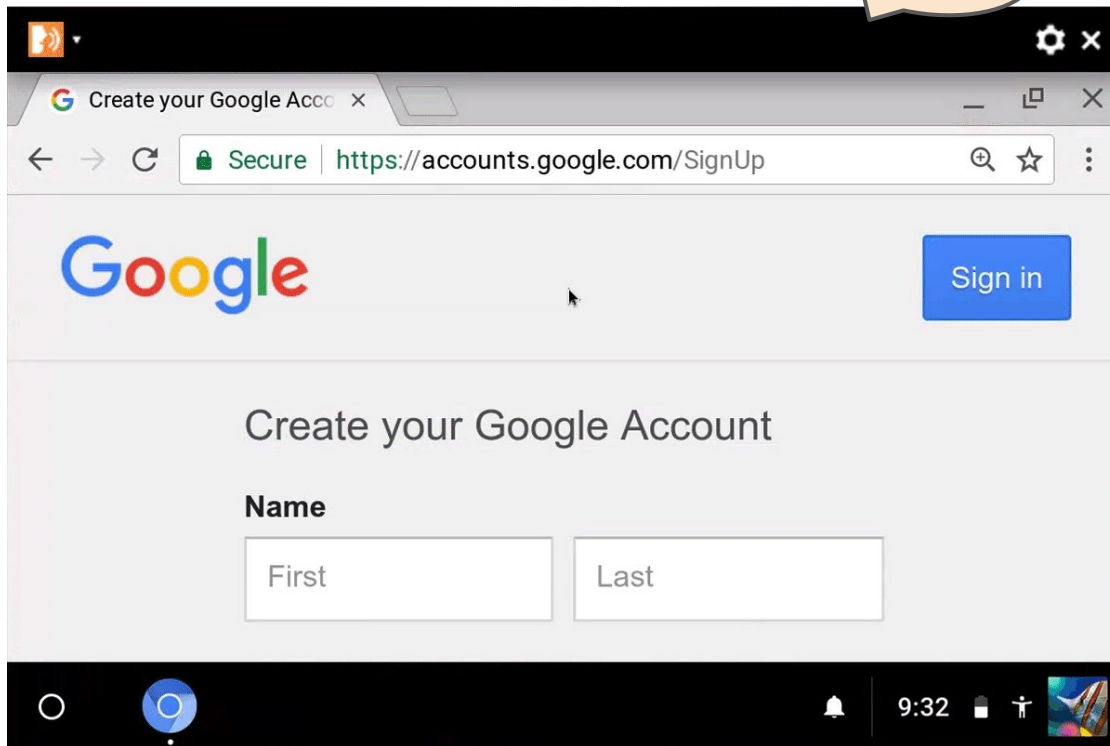


**Spoken feedback**

# ChromeVox Screen Reader

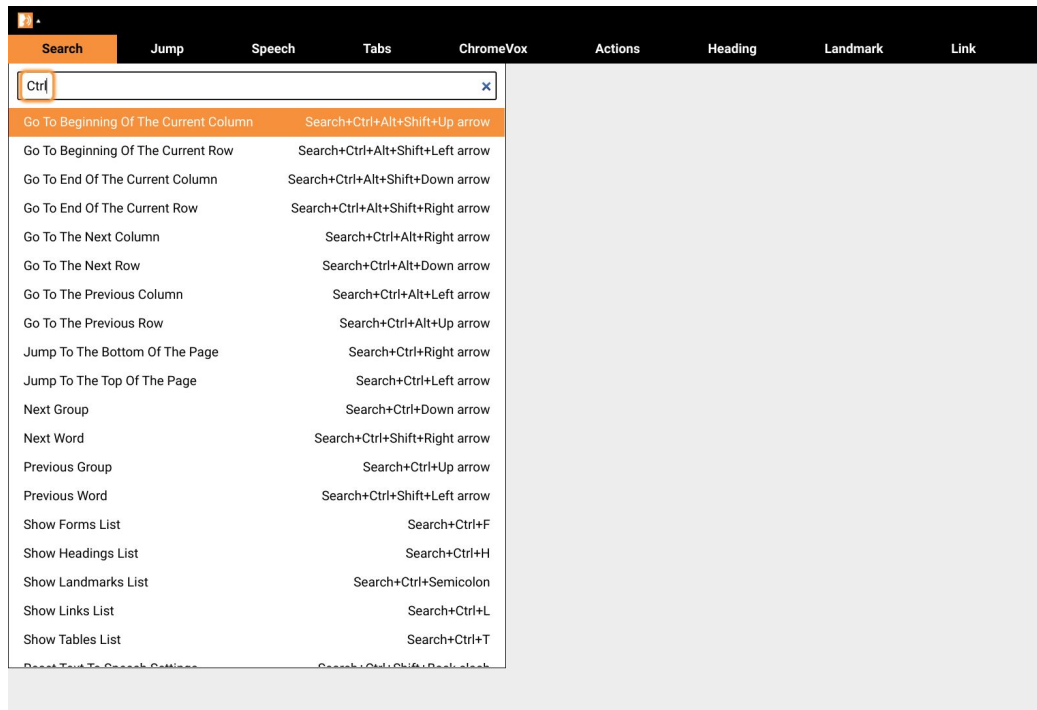
The built-in ChromeVox screen reader makes everything accessible using synthesized speech.

Press Ctrl+Alt+Z to enable or disable it at any time.



# Lots of ChromeVox Improvements!

- ✓ Faster, more consistent experience
- ✓ Searchable ChromeVox menu
- ✓ Automatic Voice Switching
- ✓ New ChromeVox Panel with speech and optionally Braille output
- ✓ Additional speech customizations
- ✓ Smart Sticky mode
- ✓ New set of navigational sounds (“earcons”), with stereo positioning

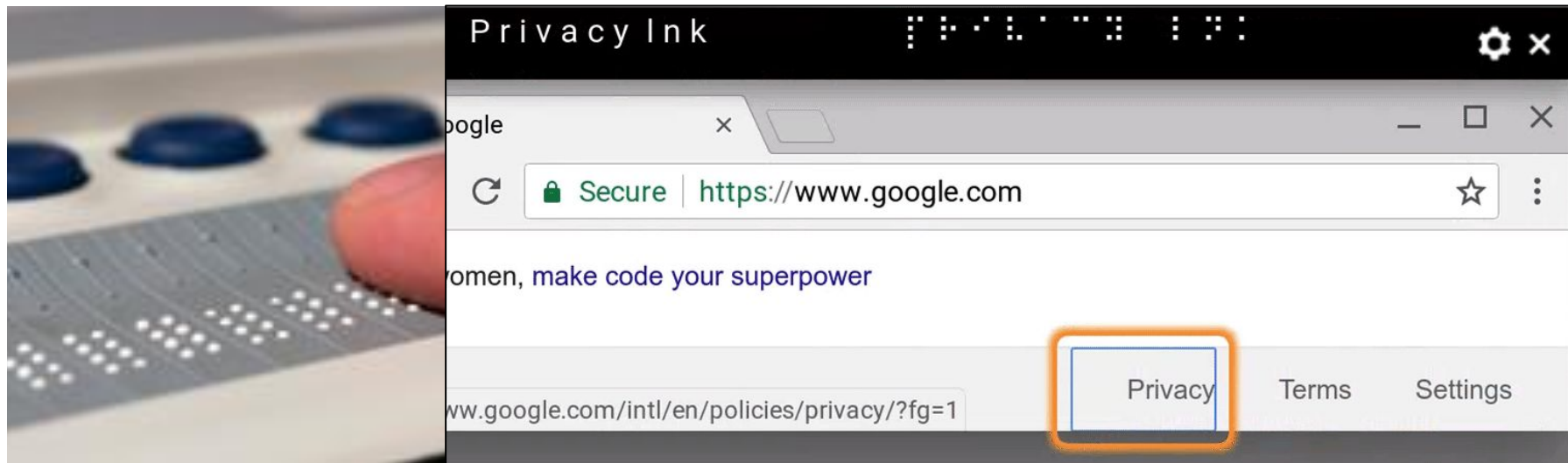


*ChromeVox Menus*



# ChromeVox Braille Support

Visually impaired users can also attach a compatible refreshable braille display (USB or bluetooth). To enable teachers and technicians to work with visually impaired users, both the braille and its text equivalent are also shown at the top of the screen.

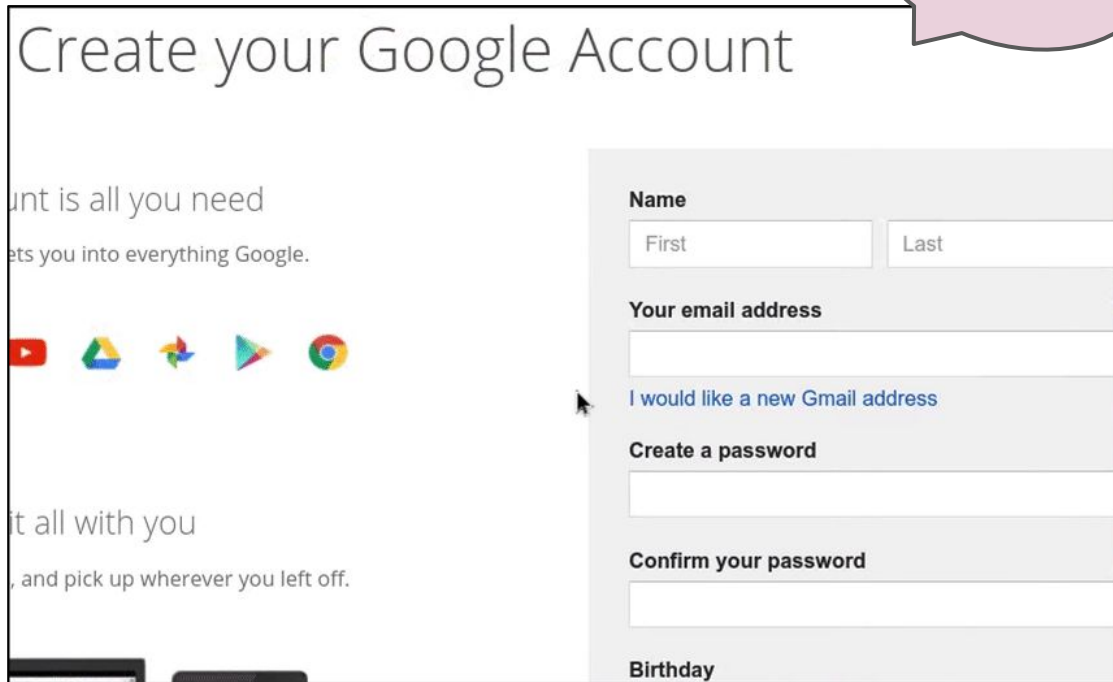


# Select-to-Speak

For users who only need synthesized speech on occasion, we offer Select-to-speak.

Press and hold the Search key, then click or drag to select content to be read aloud.

New! Background shading for better focus



The image shows a screenshot of the 'Create your Google Account' form. A pink speech bubble is positioned at the top right, pointing towards the title 'Create your Google Account'. The form is divided into several sections with light gray backgrounds. The 'Name' section has two input fields for 'First' and 'Last'. The 'Your email address' section has a single input field and a link that says 'I would like a new Gmail address'. The 'Create a password' section has an input field. The 'Confirm your password' section has an input field. The 'Birthday' section is partially visible at the bottom. On the left side of the form, there is a row of five colorful icons: YouTube, Google Drive, Google Maps, Google Play, and Google Chrome. The text 'unt is all you need' and 'ets you into everything Google.' is visible on the left side of the form.

## Create your Google Account

unt is all you need  
ets you into everything Google.

YouTube Google Drive Google Maps Google Play Google Chrome

it all with you  
, and pick up wherever you left off.

**Name**

First Last

**Your email address**

[I would like a new Gmail address](#)

**Create a password**

**Confirm your password**

**Birthday**

# Text-to-Speech Voices from Acapela!

We've added the ability to download and install Acapela voices on Chromebooks!

**30+ languages, 100+ voices!**





# **Customizing Chromebooks with Apps & Extensions**

# Reducing clutter and distractions

## Stay Focusd



Limits time you spend on each site

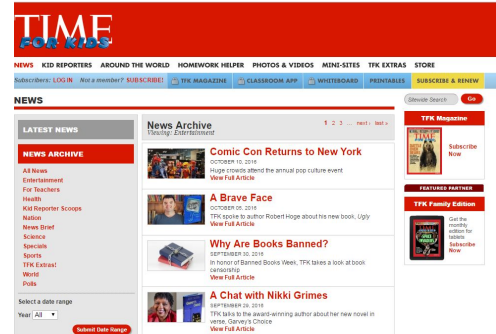
Huge help for students with ADHD

## MagicScroll Web Reader



Removes clutter and distractions (noise) from busy websites

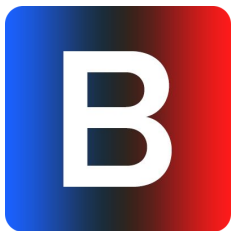
## Adblock Plus



Blocks all ads to help increase focus

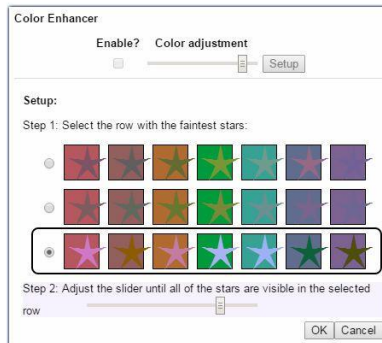
# Increasing visibility & Reducing Eye Strain

## BeeLine Reader



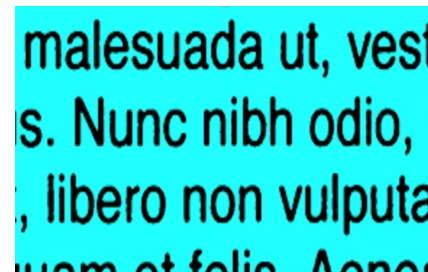
- Reduces eye strain
- Assists with eye tracking
- Dyslexic-friendly font

## Google Color Enhancer



- Customizable color filter
- Improves color perception

## MagX



- Turns computer into a video magnifier
- High contrast, magnification, and color viewing options

# Improving Content Interaction

## Read&Write



- Word prediction
- Text to speech
- Picture dictionary
- Voice notes
- Collect highlights

## Co:Writer



- Excellent word prediction
- Support with grammar and spelling

## Dualless

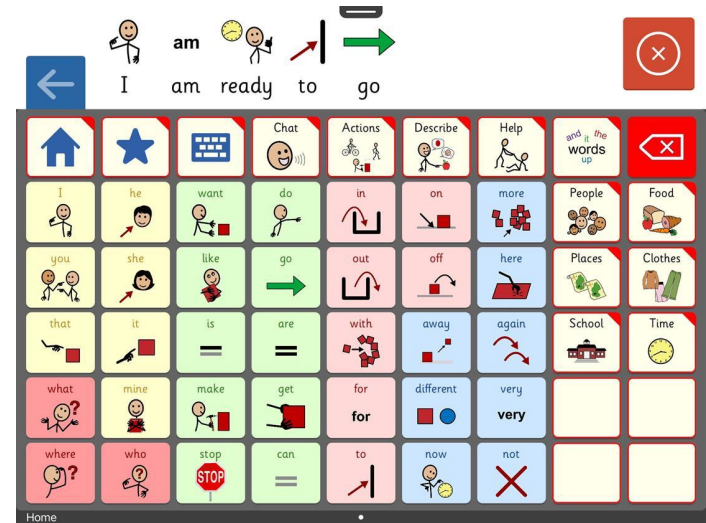


- Splits screen on a Chromebook like a dual monitor
- Helps with focus



# AAC - Clicker Communicator App

- Available for purchase from the Chrome Web Store
- Works offline
- Excellent integration with Google Drive
- Acapela childrens voices available
- Core vocabulary sets available, as well as highly customizable ones



# **Leveraging G Suite Apps - Anecdotes from Teachers**



## Drive - The New Digital Backpack!

- Students with executive functioning issues often struggle with **organization**.
- Google Drive can quickly become a mess.
- Opportunity for learning **important skills**.



# Simplicity Of Docs Can Have a Huge Impact!

- Gives students **independence and dignity** - teachers and students can work together without sitting next to each other
- Consider embedding links to images/videos to help with **comprehension**
- Leverage speech to text for kids who may shut down when they are told to write to increase **engagement**
- Use **hyperdocs** for self-paced and inquiry-based learning.



# Slides

- Seamless ability to include **images, videos, and annotations**
- Easy to **break down tasks** and assignments on a per-slide basis, with helpful notes in the speaker notes section
- Linear nature of slides creates a natural **organizational structure** that is visual
- Q&A allows students to **interact and ask questions** in an unobtrusive manner



# Forms - More Than A Survey!

- **Tracking** student growth
- **Documenting** IEP data
- IEP team collects and views **data** on goal growth
- Gathering **information** from students, parents, staff, etc.
- Student work **submissions**
- **Flipped lessons**
- Students **gathering info** from each other
- Digital **quizzes** and giving **feedback**



**Where to Learn More**

# Resources & Communication

## Resources

- ✓ Google Accessibility site: [google.com/accessibility](https://google.com/accessibility)
- ✓ Google Accessibility Help Center: [g.co/help/accessibility](https://g.co/help/accessibility)
- ✓ Chromebook Help Center: [support.google.com/chromebook](https://support.google.com/chromebook)
- ✓ Google Accessibility YouTube Playlist (includes 21 Chrome/Chrome OS videos) - [goo.gle/a11y-youtube](https://goo.gle/a11y-youtube)
- ✓ [Chrome Web Store Accessibility Category](#)
- ✓ Google for Edu site: [edu.google.com/accessibility](https://edu.google.com/accessibility)
- ✓ Teach from Anywhere site (includes guide for parents/guardians): [g.co/teachfromanywhere](https://g.co/teachfromanywhere)

## Communication

- ✓ **Join Google Groups at [groups.google.com](https://groups.google.com):**
  - [chromebook-accessibility@googlegroups.com](mailto:chromebook-accessibility@googlegroups.com)
  - [chromevox-discuss@googlegroups.com](mailto:chromevox-discuss@googlegroups.com)
- ✓ Contact support agents: [g.co/disabilitysupport](https://g.co/disabilitysupport)



**THANK YOU!**